



Flat 2, Railway Court Windsor Road, Salisbury, Wiltshire, SP2 7AR

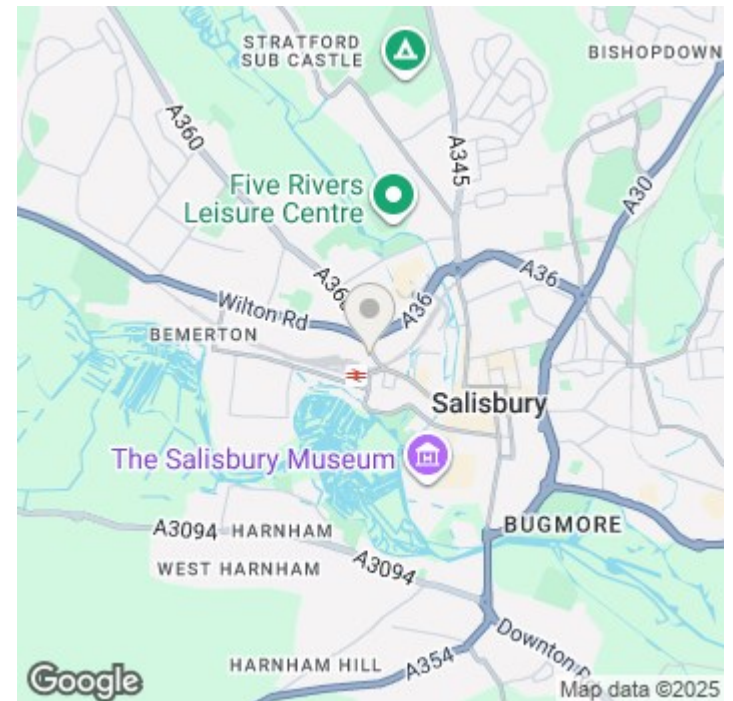
£120,000 Leasehold

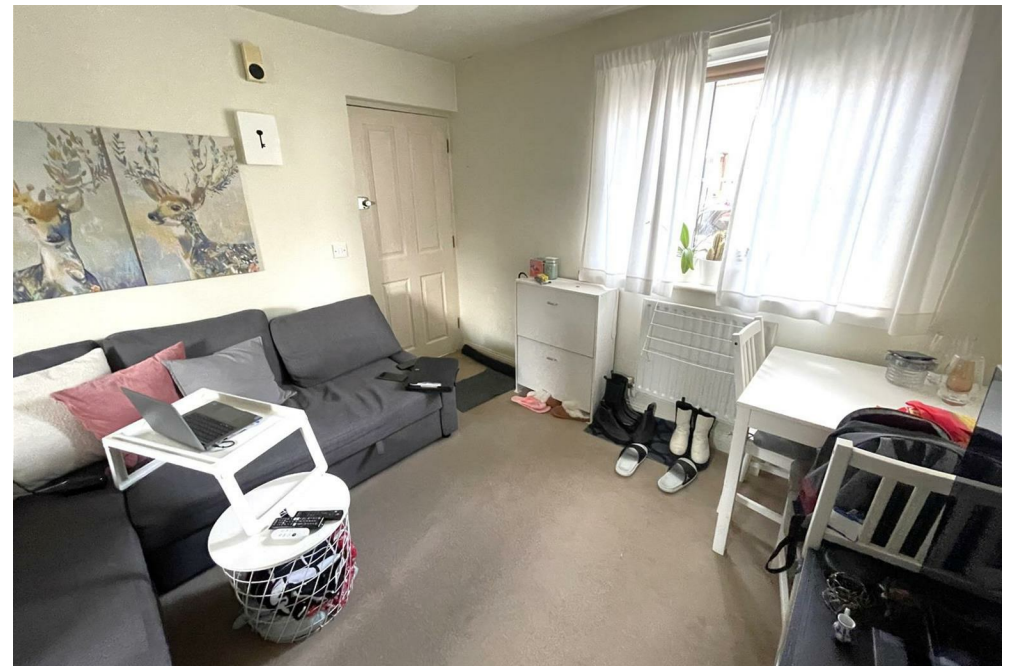
## About The Property

Situated at the end of a small cul-de-sac and within walking distance of the main line train station (Waterloo 1 hour 40 minutes) and city centre as well as a local mini mart, this is a compact ground floor apartment in a modern block, offered with vacant possession.

An entry intercom system at the front door gives access to the communal entrance hall with with stairs to the first floor. A private front door leads into the sitting room/kitchen which has a work surface with inset sink and drainer, cooker, base and wall cupboards, plumbing and space for washing machine and further appliance space. A door leads through to the double bedroom and another door to the ensuite shower room which has a corner cubicle with thermostatic shower, wc and hand basin. There is also a wall mounted Worcester gas fired boiler for heating and hot water. To the rear of the property is a car parking area for Railway Court.

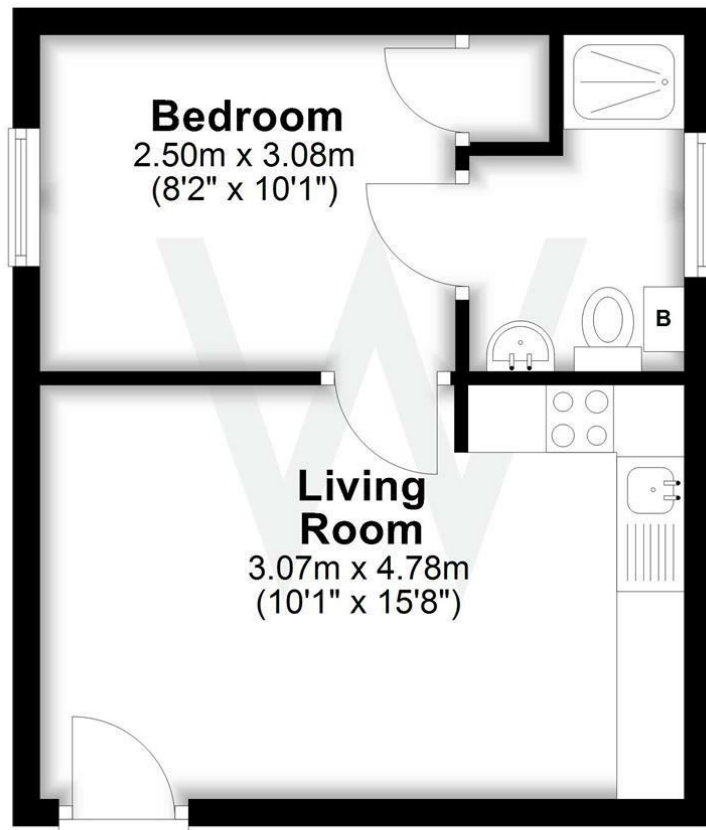
- Ground floor apartment
- Gas central heating
- Double glazing
- Parking
- Quiet location
- Vacant possession





## Ground Floor

Approx. 27.1 sq. metres (291.7 sq. feet)



Total area: approx. 27.1 sq. metres (291.7 sq. feet)

## Further Information

Local authority: Wiltshire Council

Council Tax: A - £1762.92 (2025/2026)

Tenure: Leasehold

Services: Mains, water, electricity and gas

Heating: Gas central heating

Tenure: 250 year lease from 2019

Directions: From our office in Castle Street proceed north to the ring road and bear left at the roundabout. At the next roundabout bear left and Windsor street is first on the right.

What3words: ///limes.print.allow

Energy Efficiency Rating		
	Current	Potential
Very energy efficient - lower running costs		
(92 plus) A		
(81-91) B		
(69-80) C	73	75
(55-68) D		
(39-54) E		
(21-38) F		
(1-20) G		
Not energy efficient - higher running costs		
England & Wales	EU Directive 2002/91/EC	